

# SITE IMPROVEMENTS

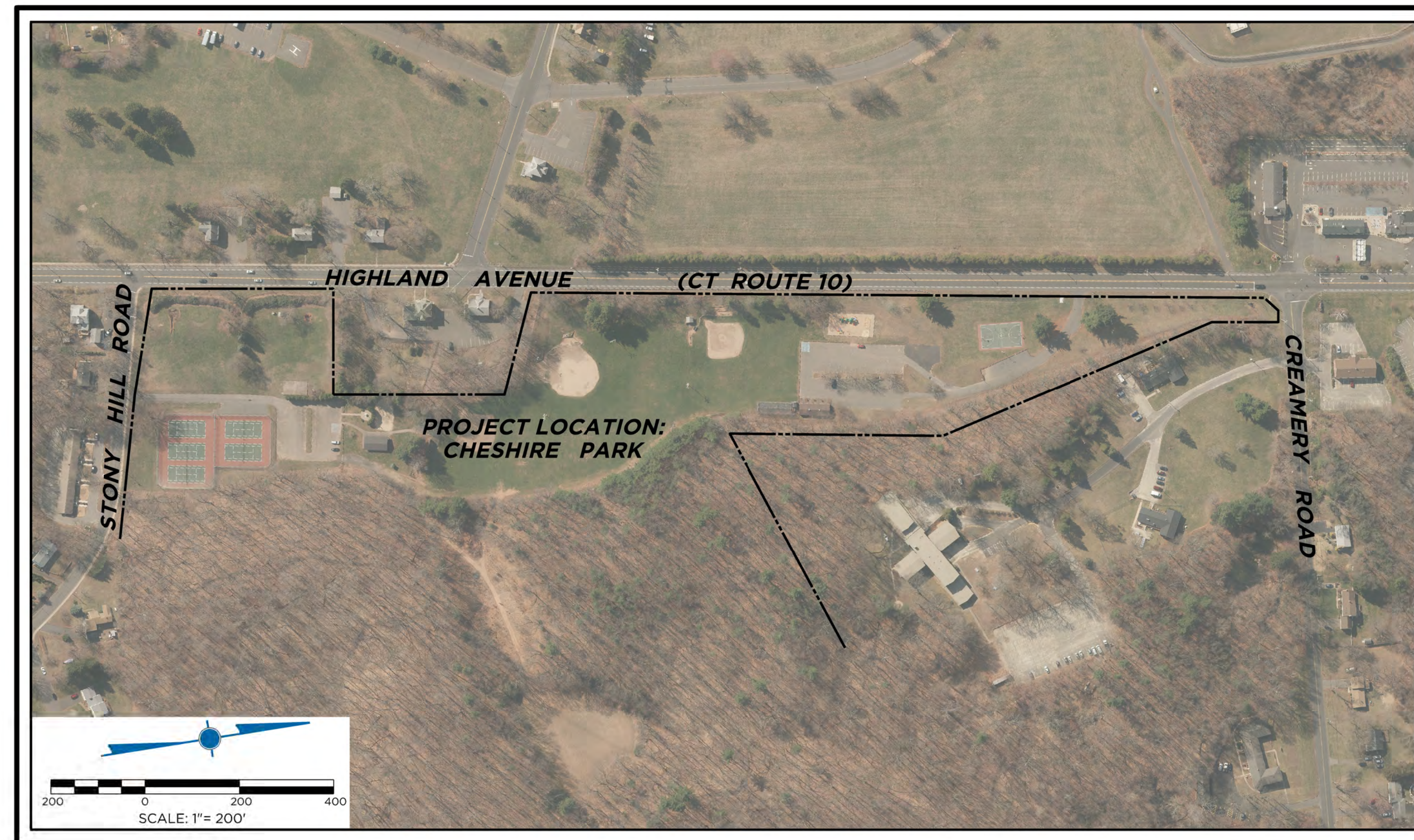
AT

## CHESHIRE PARK

CHESHIRE, CT

PREPARED FOR

TOWN OF CHESHIRE  
84 SOUTH MAIN STREET  
CHESHIRE, CT 06410



**LOCATION MAP**  
SCALE: 1" = 200'

### LIST OF SHEETS

DATE: 09/14/22  
REVISED:

SITE LAYOUT	1
SITE GRADING & DRAINAGE 1	2
SITE GRADING & DRAINAGE 2	3
E&S AND UTILITY DETAILS	4
SITE DETAILS	5

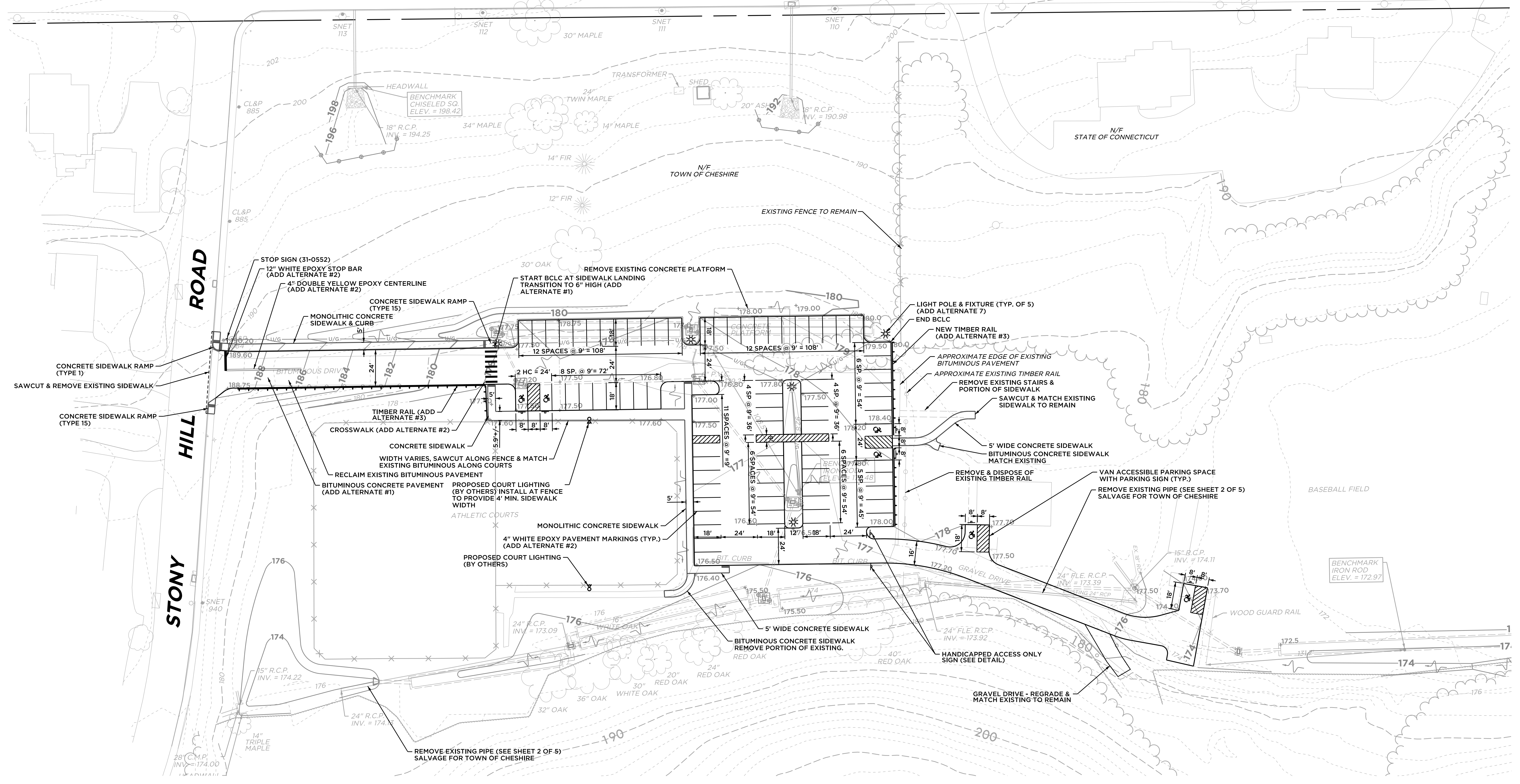
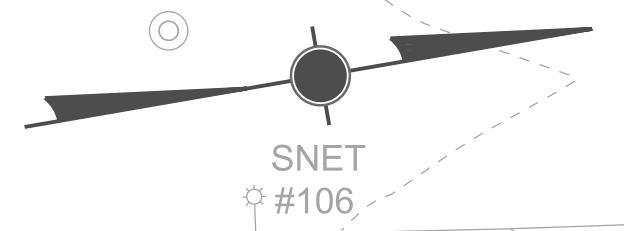
PREPARED BY:

**Barton & Loguidice**  
41 Sequin Drive  
Glastenbury, CT 06033  
Phone: (860) 633-8770  
Fax: (860) 633-5971  
www.bandlct.com

Civil Engineering • Environmental Consulting • Land Surveying • Construction Management



# HIGHLAND AVENUE (CT ROUTE 10)



**Barton & Loguidice**

Civil Engineering • Environmental Consulting • Land Surveying • Construction Management

41 Sequin Drive  
Glastonbury, CT 06033  
Phone: (860) 633-9370  
Fax: (860) 633-5971  
www.bandct.com

**CHESHIRE PARK SITE IMPROVEMENTS**

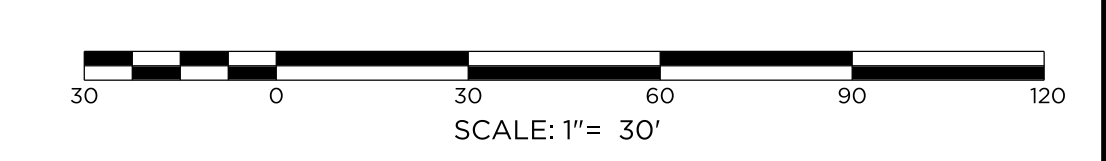
PREPARED FOR  
TOWN OF CHESHIRE

**SITE LAYOUT**

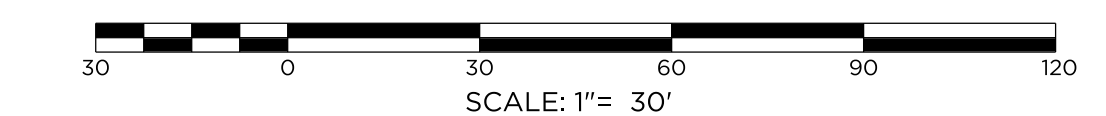
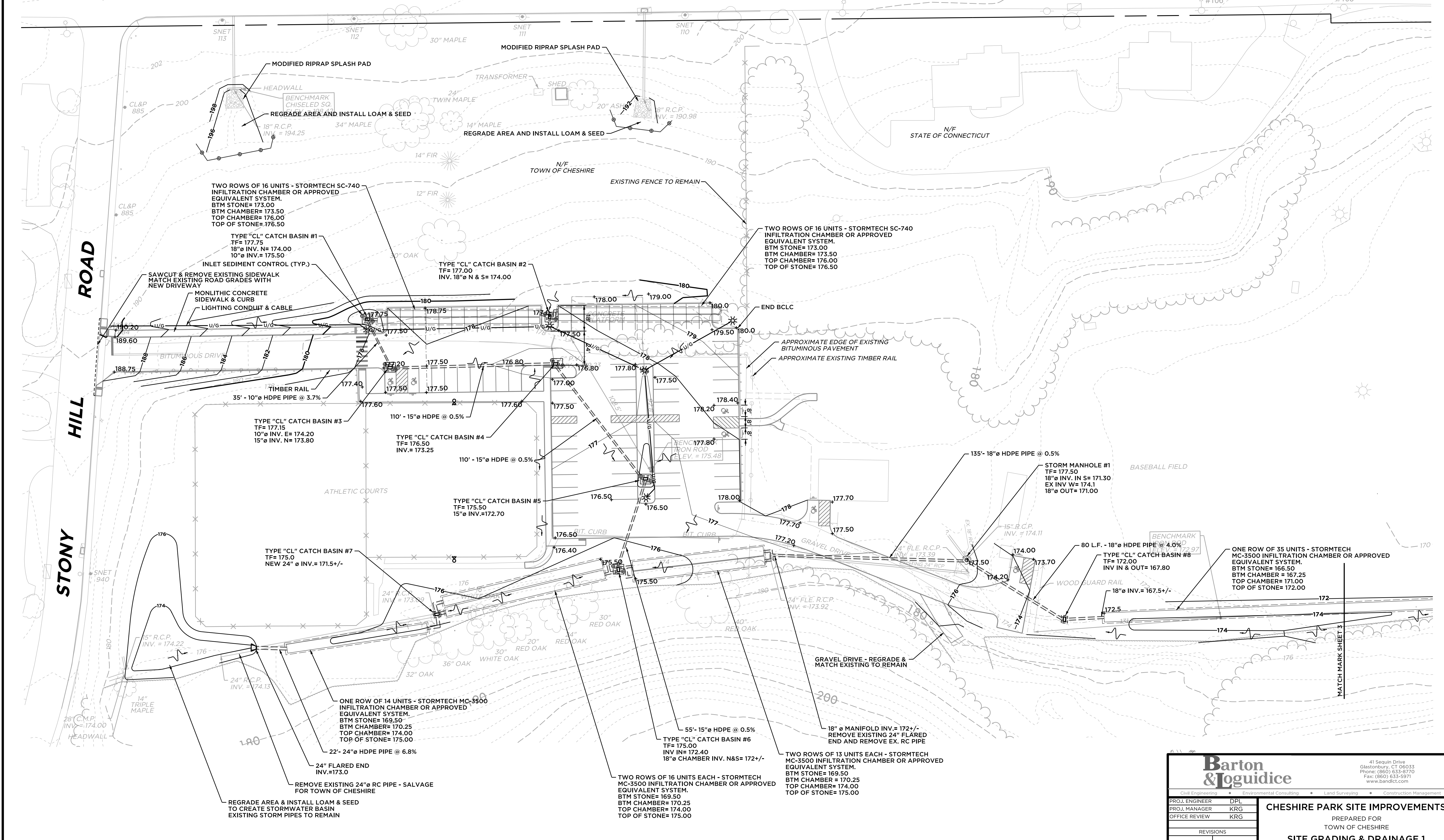
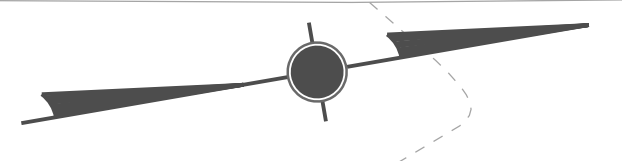
STONY HILL RD & HIGHLAND AVE CHESHIRE, CT

PROJ. ENGINEER	DPL	PROJECT	DATE	SHEET NO.	1	OF	5
PROJ. MANAGER	KRG	3981-010	09/14/22				
OFFICE REVIEW	KRG						
REVISIONS							

SCALE: 1" = 30'



# HIGHLAND AVENUE (CT ROUTE 10)



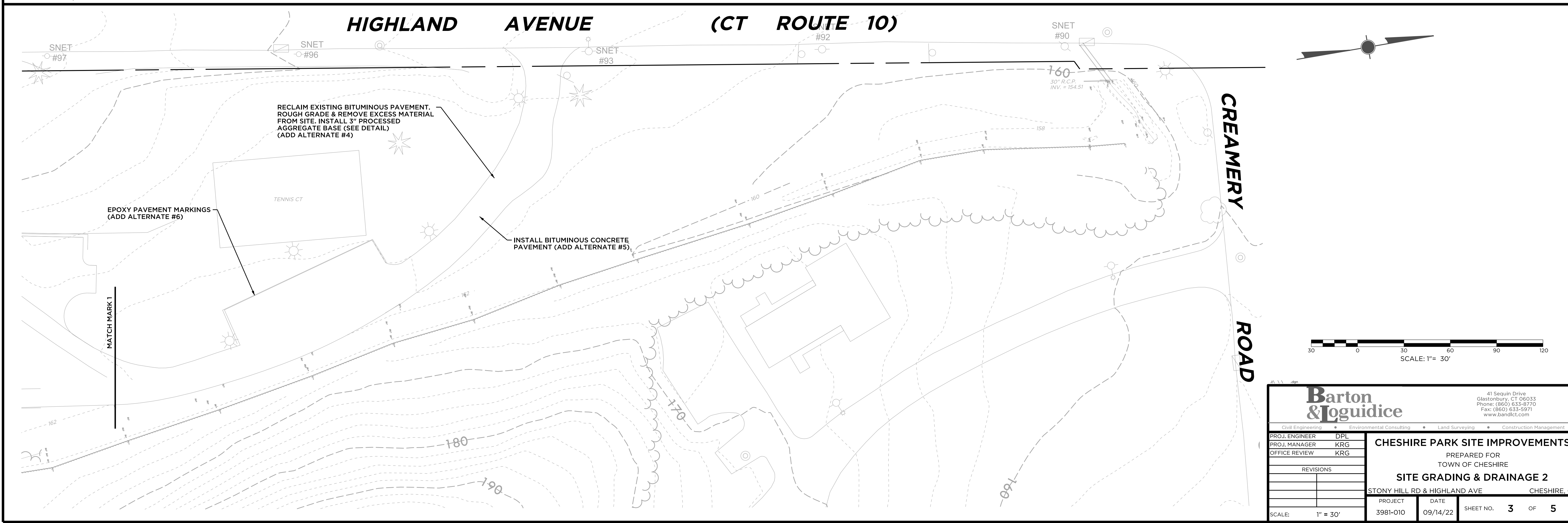
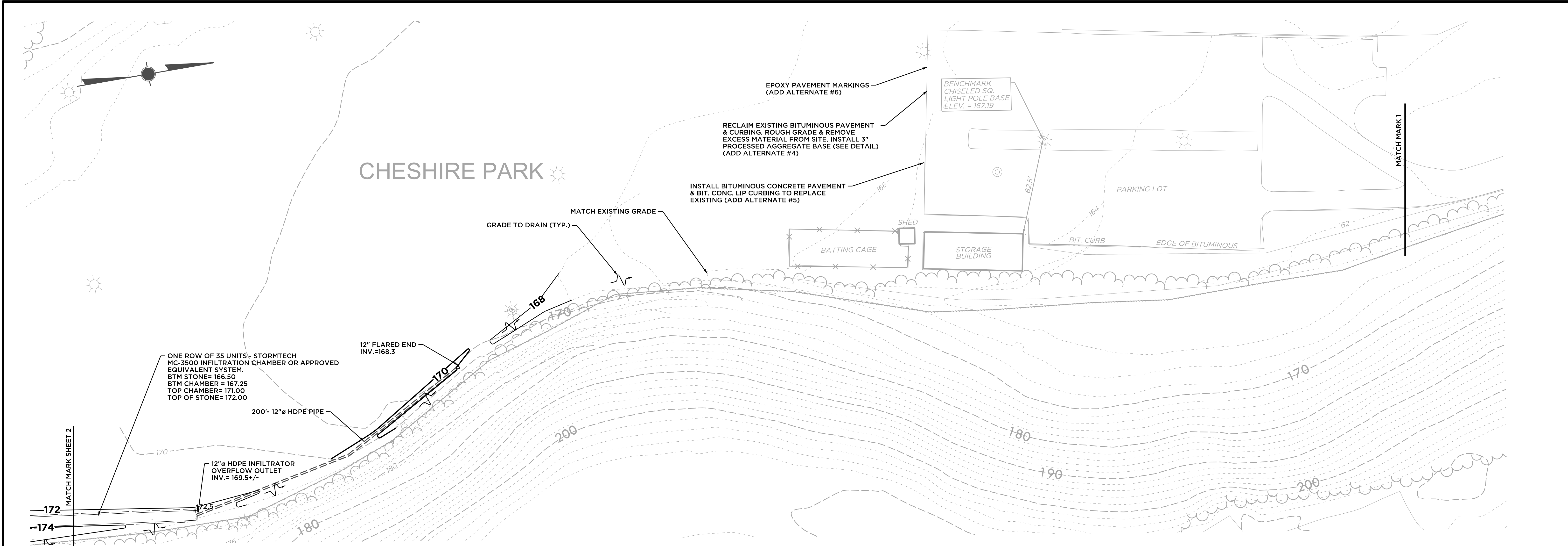
**Barton & Loguidice**

41 Sequin Drive  
Glastonbury, CT 06033  
Phone: (860) 633-9370  
Fax: (860) 633-5971  
www.bandct.com

---

Civil Engineering • Environmental Consulting • Land Surveying • Construction Management

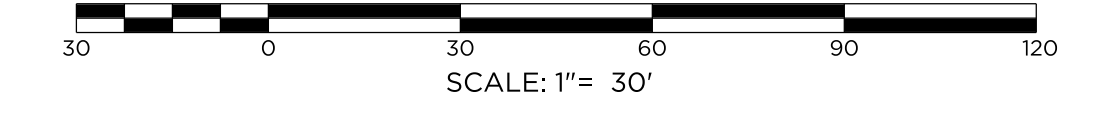
PROJ. ENGINEER	DPL	<b>CHESHIRE PARK SITE IMPROVEMENTS</b>
PROJ. MANAGER	KRG	
OFFICE REVIEW	KRG	
REVISIONS		PREPARED FOR TOWN OF CHESHIRE
		<b>SITE GRADING &amp; DRAINAGE 1</b>
		STONY HILL RD & HIGHLAND AVE CHESHIRE, CT
PROJECT	DATE	SHEET NO. <b>2</b> OF <b>5</b>
SCALE: 1" = 30'	3981-010	09/14/22



CHESHIRE PARK

HIGHLAND AVENUE (CT ROUTE 10)

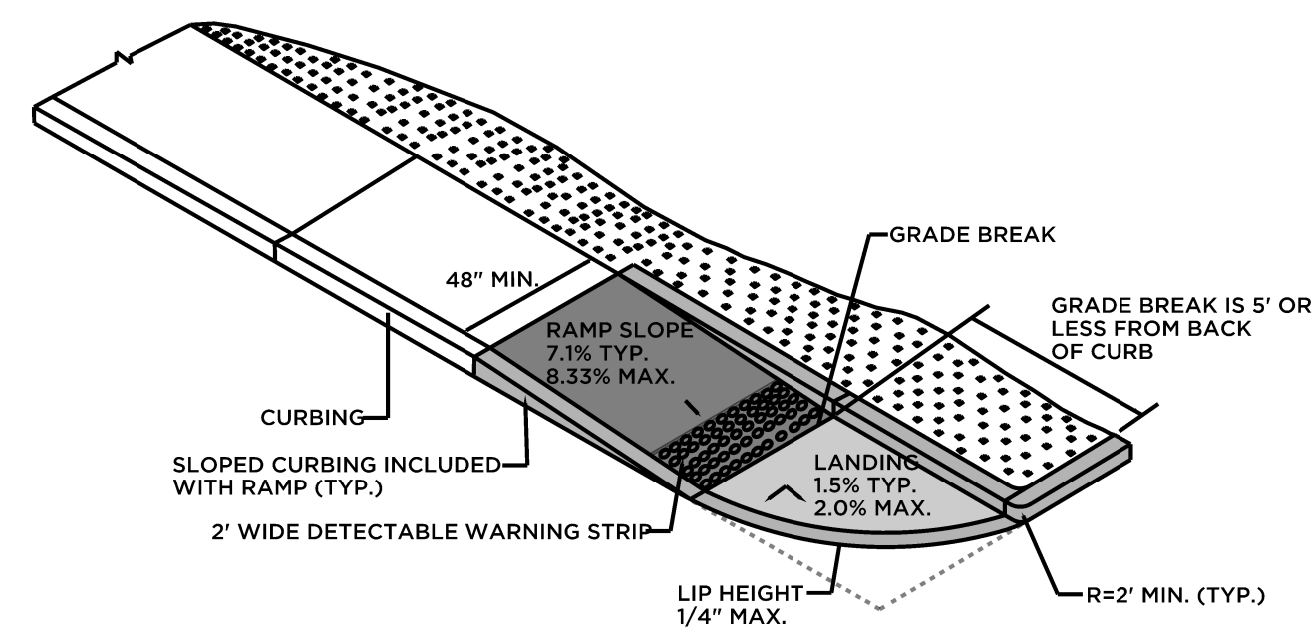
CREAMERY ROAD



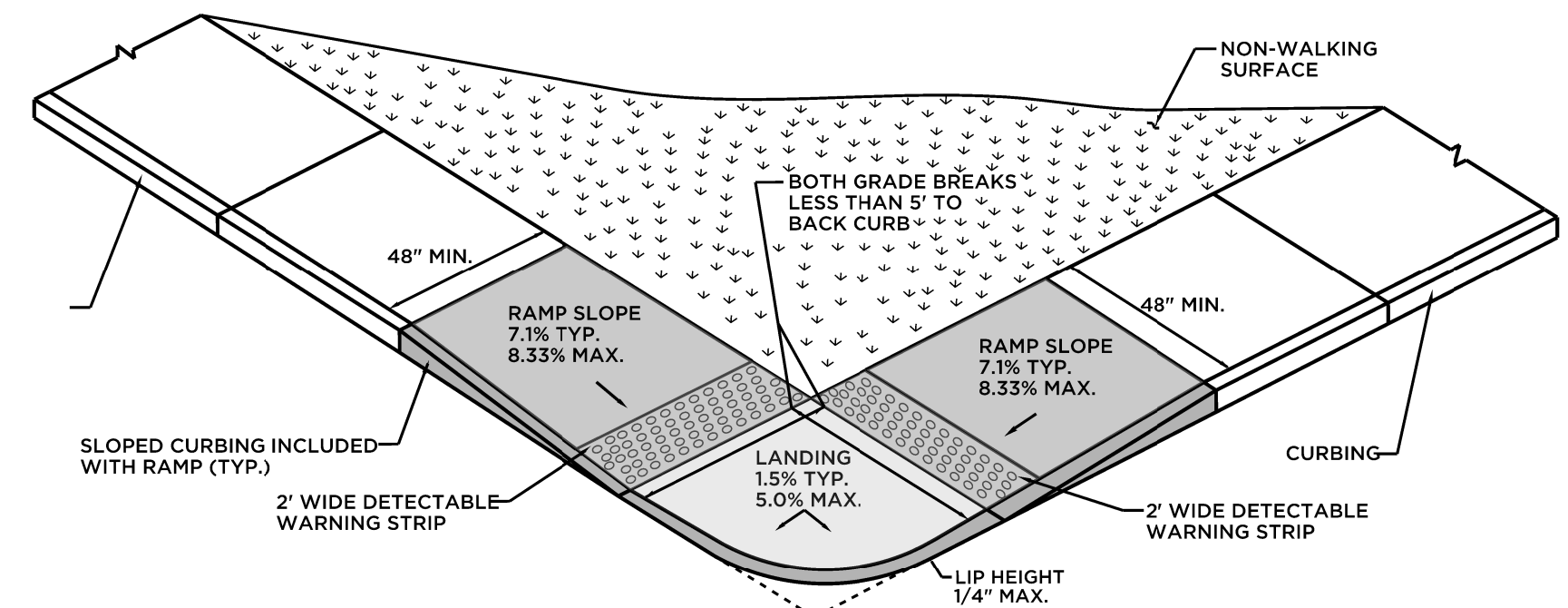
**Barton & Loguidice**  
 41 Sequin Drive  
 Glastonbury, CT 06033  
 Phone: (860) 633-9370  
 Fax: (860) 633-5971  
 www.bandct.com

PROJ. ENGINEER	DPL	CHESHIRE PARK SITE IMPROVEMENTS PREPARED FOR TOWN OF CHESHIRE SITE GRADING & DRAINAGE 2 STONY HILL RD & HIGHLAND AVE CHESHIRE, CT
PROJ. MANAGER	KRG	
OFFICE REVIEW	KRG	
REVISIONS		
PROJECT	DATE	SHEET NO. 3 OF 5
3981-010	09/14/22	
SCALE:	1" = 30'	

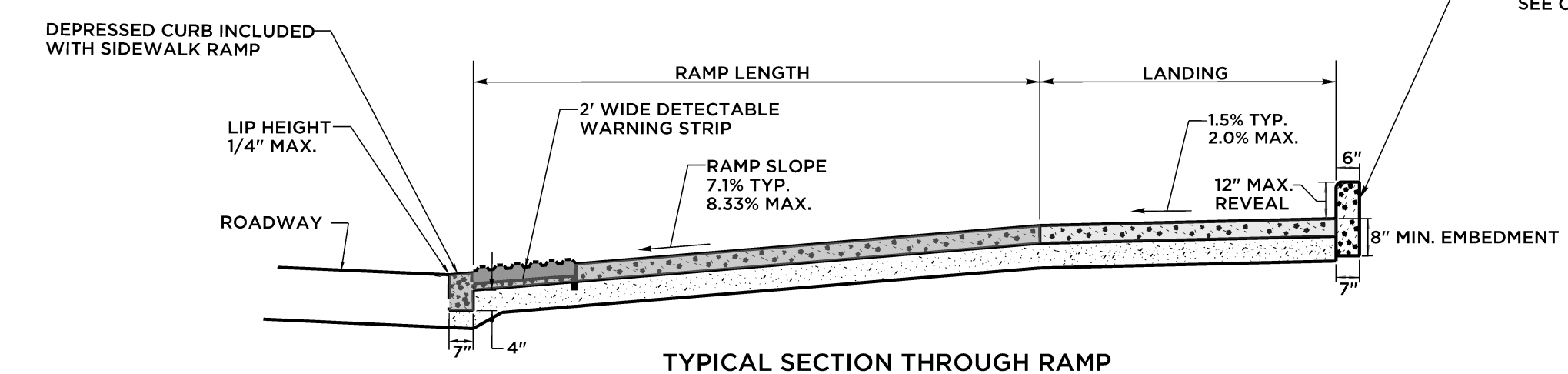




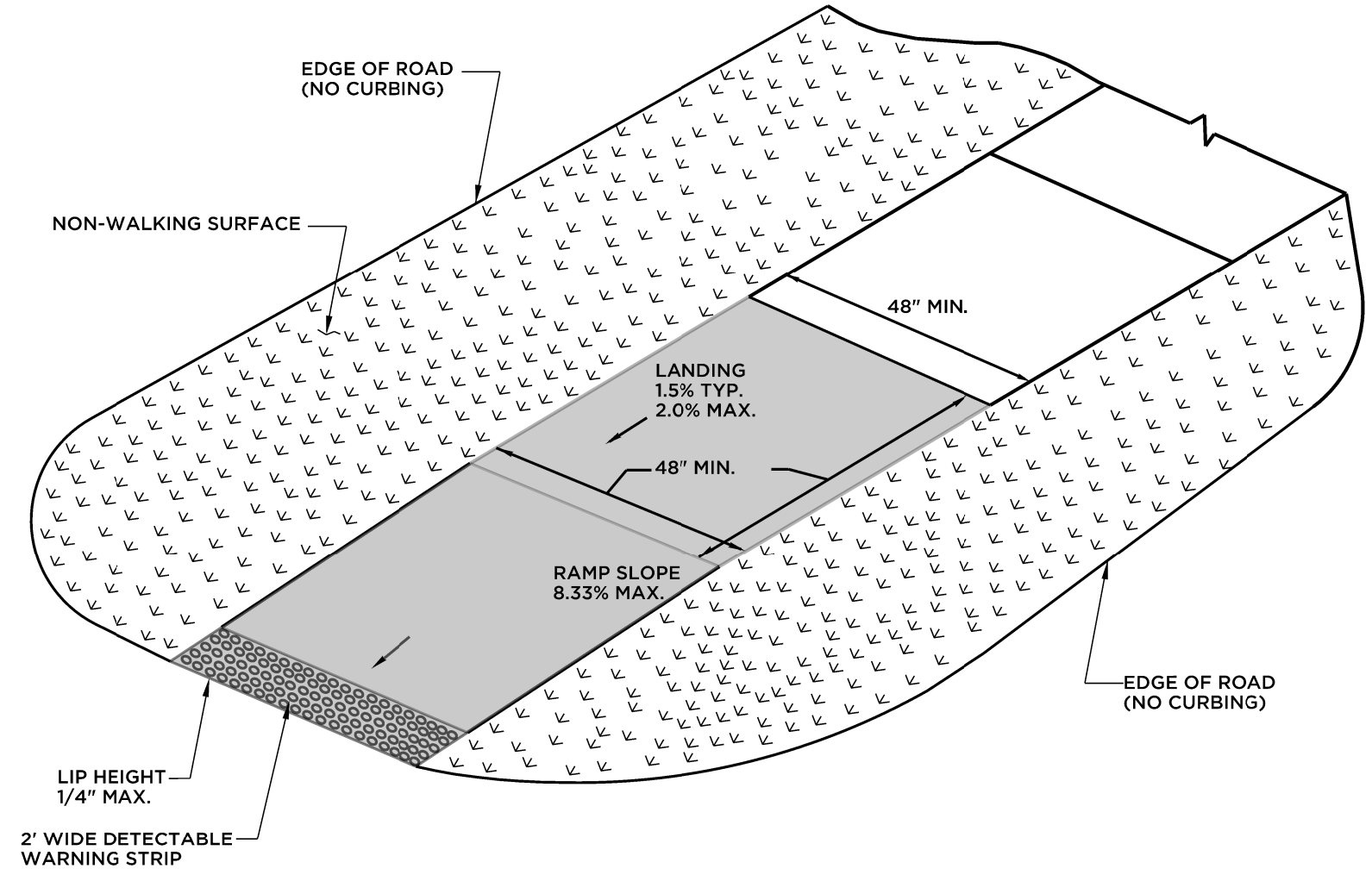
**SINGLE DIRECTION RAMP WITHOUT NON-WALKING SURFACE GRADE BREAK 5' OR LESS (TYPE 15)**



**PERPENDICULAR RAMP WITH A GRADE BREAK OF 5' OR LESS (TYPE 1)**



**TYPICAL SECTION THROUGH RAMP**



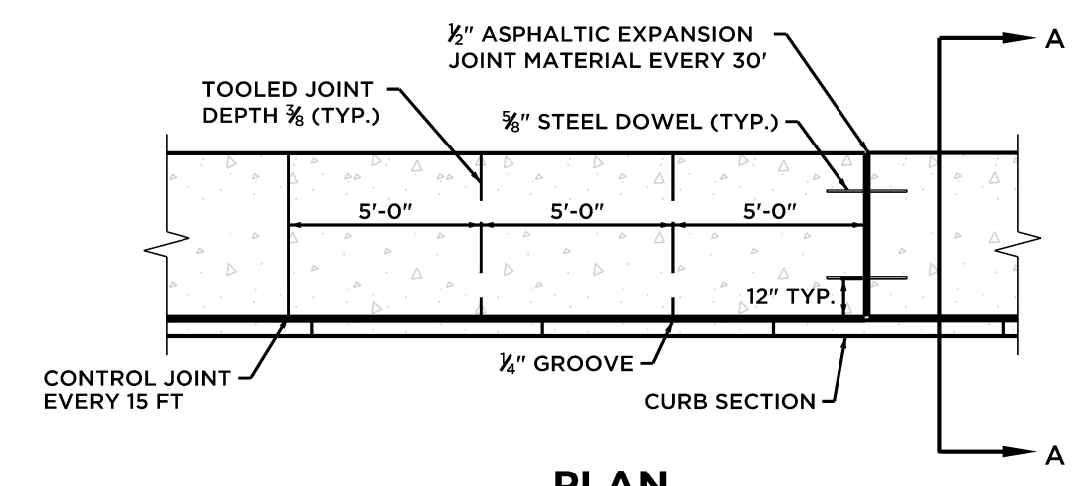
**SINGLE DIRECTION - NO CURB WITH NON-WALKING SURFACE (TYPE 17)**

SIDEWALK CURBING AS REQUIRED INCLUDED WITH SIDEWALK RAMP SEE CONCRETE CURB DETAIL

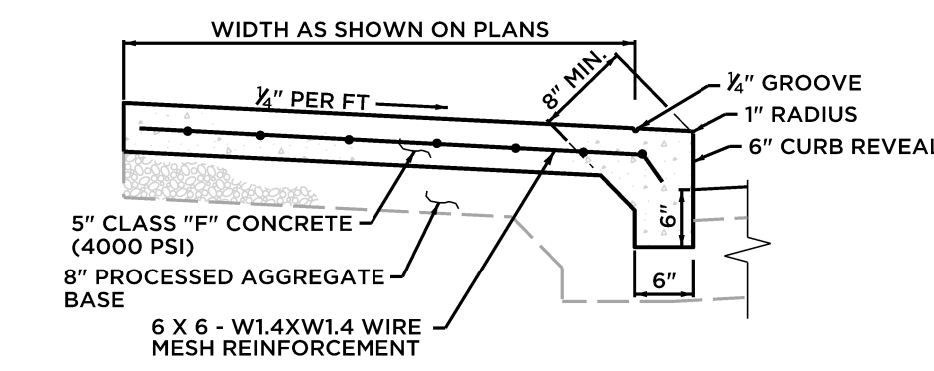
**SIDEWALK AND RAMP GENERAL NOTES:**

1. SIDEWALK RAMP SHALL HAVE A COARSE BROOM FINISH TRAVERSE TO THE SLOPE OF THE RAMP.
2. VERTICAL SURFACE DISCONTINUITIES AT JOINTS SHALL NOT EXCEED 1/8 INCH.
3. REMOVAL OF EXISTING SIDEWALK FOR NEW RAMP INSTALLATIONS SHALL BE TO THE NEAREST EXPANSION OR CONTRACTION JOINT.
4. THE RUNNING SLOPE OF THE CURB RAMP SHALL BE 8.3 PERCENT MAXIMUM BUT SHALL NOT REQUIRE THE RAMP LENGTH TO EXCEED 15 FEET.

**SIDEWALK RAMPS**  
NOT TO SCALE

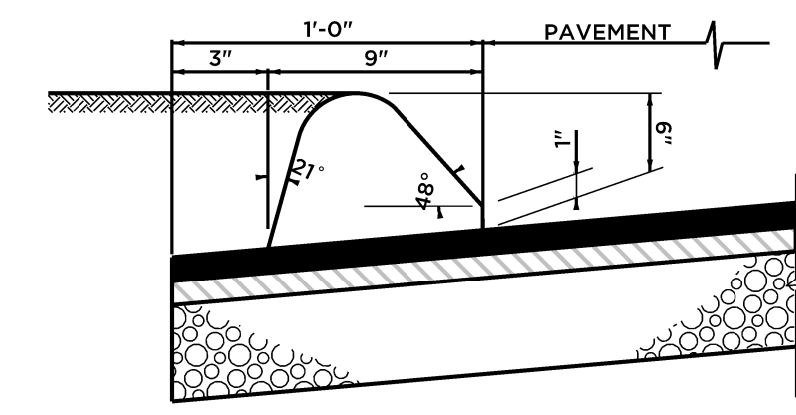


**PLAN**



**SECTION A-A**

**CONCRETE SIDEWALK AND CURB MONOLITHIC**  
NOT TO SCALE

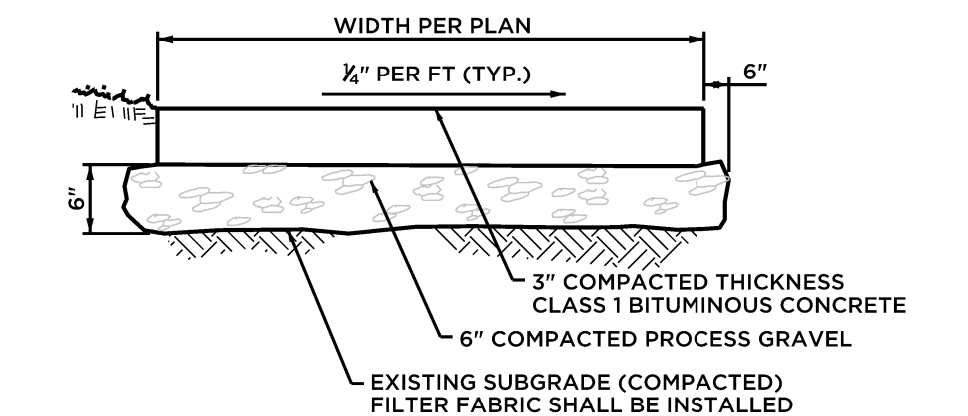


**SECTION**

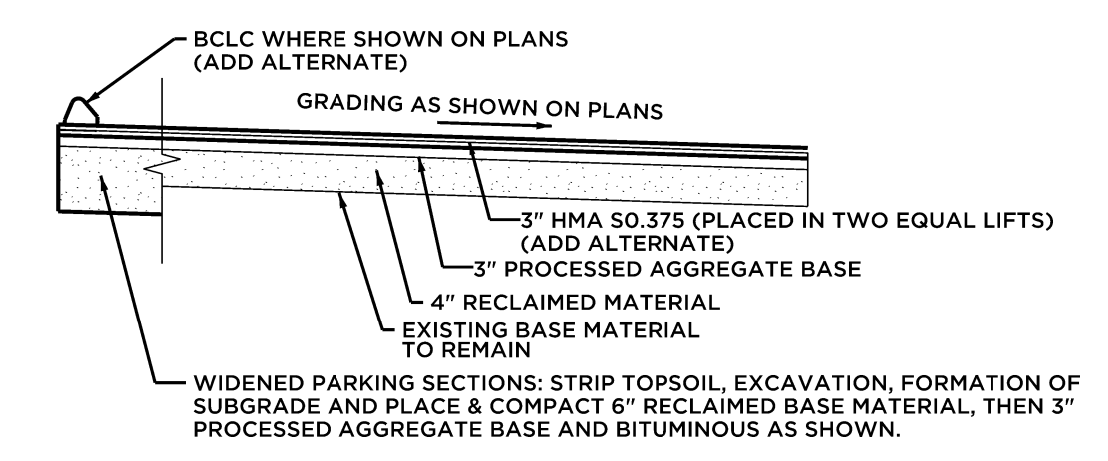
CURB NOTES:

1. SURFACE ON WHICH CURBING IS PLACED SHALL BE CLEAN AND AN APPROVED TACK COAT SHALL BE APPLIED JUST PRIOR TO PLACING CURB.
2. CURBING SHALL BE MACHINE EXTRUDED.

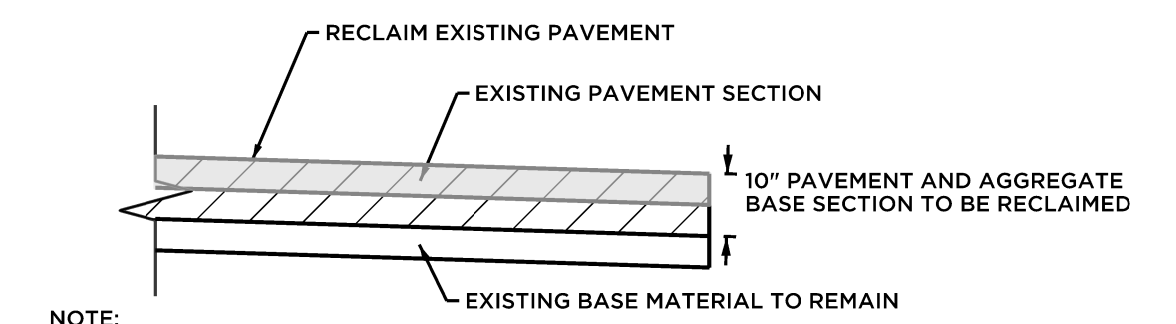
**BITUMINOUS CONCRETE CURB (BCLC)**  
NOT TO SCALE



**BITUMINOUS CONCRETE WALKWAY DETAIL**  
NOT TO SCALE



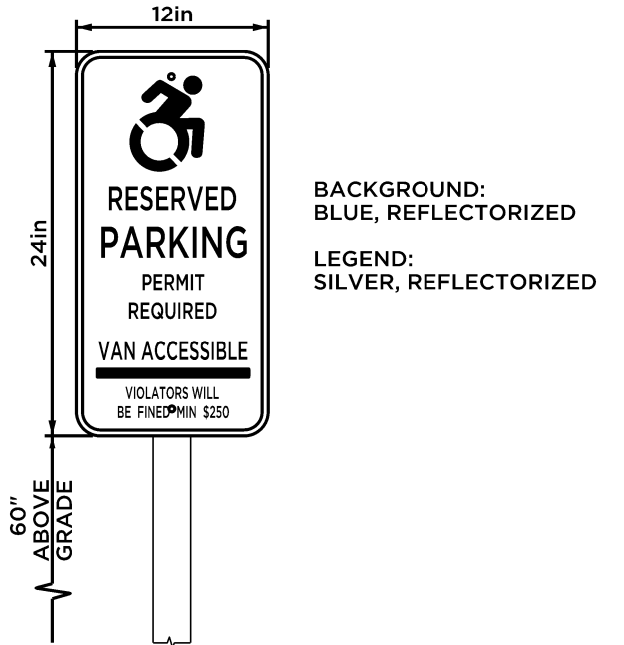
**TYPICAL PAVEMENT SECTION**  
NOT TO SCALE



NOTE:

1. MATERIAL GENERATED BY RECLAIMING ACTIVITIES SHALL BE SPREAD ON SITE TO PROVIDE BASE MATERIAL FOR PARKING AREAS AS SHOWN IN THE TYPICAL PAVEMENT SECTION. ANY EXCESS MATERIAL SHALL BE REMOVED FROM THE SITE. ENOUGH RECLAIMED MATERIAL SHALL BE REMOVED TO ALLOW 3" OF BITUMINOUS AND 3" PROCESSED AGGREGATE BASE MATERIAL TO BE INSTALLED. (SEE TYPICAL PAVEMENT SECTION ABOVE). FINAL GRADES SHALL MATCH GRADING PLAN.

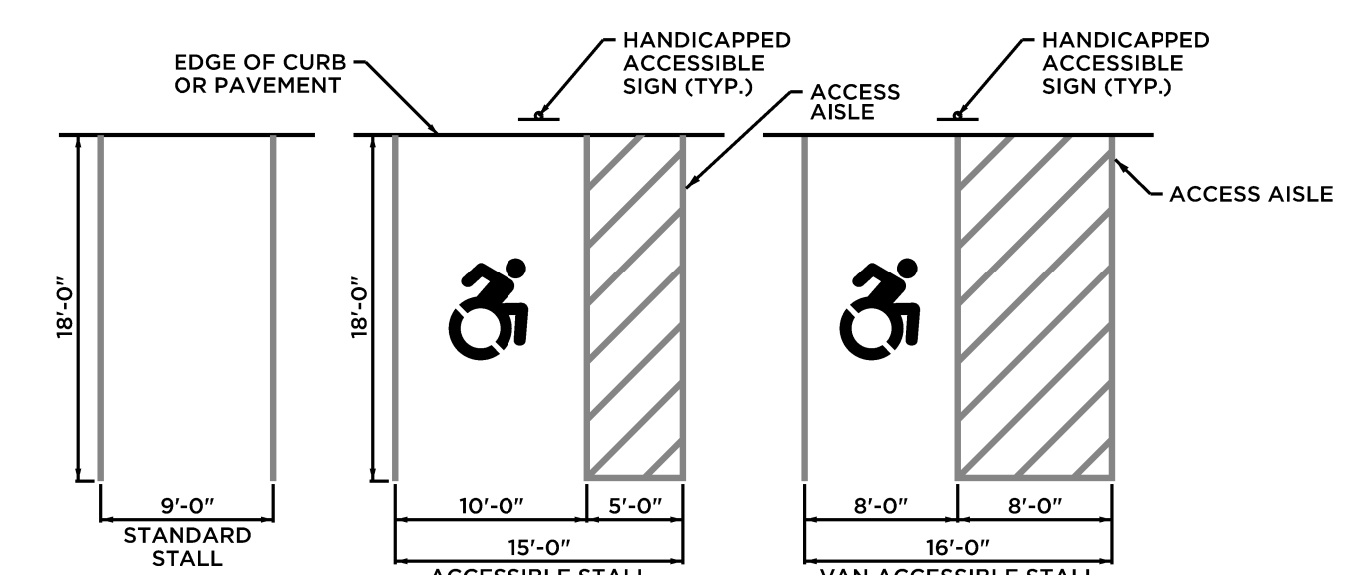
**PAVEMENT RECLAMATION SECTION**  
NOT TO SCALE



**HANDICAP SIGN**  
NOT TO SCALE



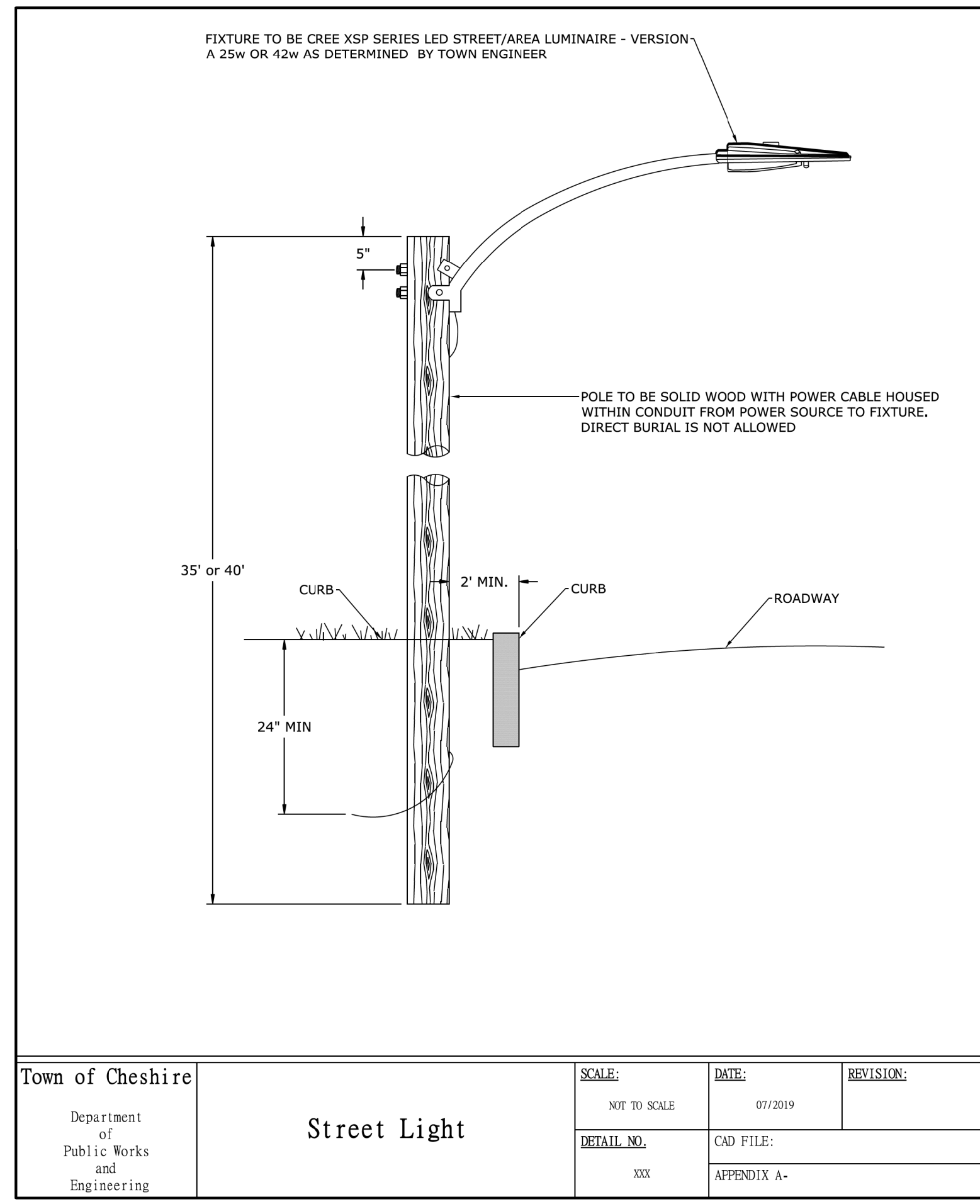
**ACCESS SIGN DETAIL**  
NOT TO SCALE



**PARKING STALL DETAILS**  
NOT TO SCALE

GENERAL NOTES:

1. ACCESS AISLES SHALL ADJOIN AN ACCESSIBLE ROUTE.
2. ACCESS AISLES (CROSS HATCH) SERVING CAR PARKING SPACES SHALL BE 60 INCHES (1525 mm) MINIMUM IN WIDTH. ACCESS AISLES SERVING VAN PARKING SPACES SHALL BE 96 INCHES (2440 mm) MINIMUM IN WIDTH. TWO PARKING SPACES SHALL BE PERMITTED TO SHARE A COMMON ACCESS AISLE. IF A CAR AND A VAN SPACE SHARE A COMMON ACCESS AISLE, THAT AISLE SHALL BE 96 INCHES MINIMUM IN WIDTH.
3. PARKING SPACES MAY HAVE ACCESS AISLES PLACED ON EITHER SIDE OF THE CAR OR VAN PARKING SPACE. VAN PARKING SPACES THAT ARE ANGLED SHALL HAVE ACCESS AISLES LOCATED ON THE PASSENGER SIDE OF THE PARKING SPACE.
4. ACCESSIBLE PARKING SPACES SHALL BE IDENTIFIED BY ABOVE GRADE SIGNS IN ACCORDANCE WITH DETAILS.



Town of Cheshire Department of Public Works and Engineering	SCALE:	DATE:	REVISION:
	NOT TO SCALE	07/2019	
	DETAIL NO.:	CAD FILE:	
	xxx	APPENDIX A-	

**Barton & Loguidice**  
Civil Engineering • Environmental Consulting • Land Surveying • Construction Management

41 Sequin Drive  
Glastonbury, CT 06033  
Phone: (860) 633-9370  
Fax: (860) 633-5971  
www.bandict.com

PROJ. ENGINEER: DPL  
PROJ. MANAGER: KRK  
OFFICE REVIEW: KRK

**CHESHIRE PARK IMPROVEMENTS**  
PREPARED FOR TOWN OF CHESHIRE  
**SITE DETAILS**  
STONY HILL RD & HIGHLAND AVE CHESHIRE, CT

REVISIONS:

PROJECT	DATE	SHEET NO.	OF
3981-08	09/14/22	5	5

SCALE: NOT TO SCALE